



Strategic Plan Initiative

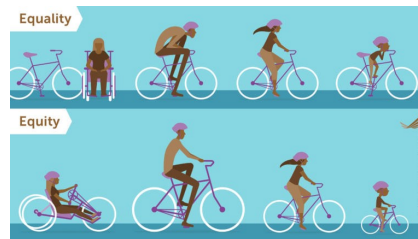
EQUITABLE ACCESS — C.1.a: Identify and remove barriers to authentic learning and high expectations for our diverse learners.



SUMMARY — By ensuring access to standards-aligned adopted curriculum and differentiated core instruction for each student, this initiative links to the Equitable Access theme of the strategic plan, which supports the six priority student outcomes.

COMPLETED:

- ✓ Used root cause analysis to identify barriers
- ✓ Provided Professional Development for co-teaching
- ✓ Provided same district resources for all students



RESOURCES:

- Continuum of Services [image](#)
- Sound enhancement [video](#)
- Standard classroom technology [images](#)
- Strategic Plan [link](#)

"Everett Public Schools provide universal access to high impact, standards-aligned, Tier 1 instruction. Our classrooms are safe, joyful and inclusive spaces where ALL students are empowered to own their learning and celebrate their growth! Students are eager to come to school." Executive Director Special Services Kelley Clevenger

STUDENT IMPACT:

- More time receiving grade level standards based instruction
- Increase sense of belonging
- Increase student engagement
- Allowing students more choices at graduation

STAFF IMPACT:

- Students will be more engaged in their learning, making classroom management easier
- With co-teaching, working along side colleagues
- Students will have more success creating an opportunity for teachers to have greater job satisfaction

QUESTIONS? PLEASE CONTACT:

Kelley Clevenger, 425-385-5250, lklevenger@everettsd.org



Strategic Plan Initiative

EQUITABLE ACCESS — C.1.b: Establish district-wide expectations for instructional time, master schedules and course offerings.



SUMMARY — By providing equitable access to resources to support student learning, this initiative links to the Equitable Access theme of the strategic plan, which supports the six priority student outcomes.

COMPLETED:

- ✓ Developed and engage middle school redesign team for 6-period day
- ✓ Worked with HS administration to analyze data for patterns of low academic intensity and develop a plan to address them



RESOURCES:

- Parent University Middle School redesign [video](#)
- Strategic plan [link](#)

“With the middle school redesign, all students will have more courses to choose from, access to arts, health and PE courses, and have greater opportunities to earn high school credits prior to entering 9th grade.”

STUDENT IMPACT:

- Students have more electives to choose from
- Students take 1.5 semesters of electives
- Health class in grades 6 and 7 are separated from PE time
- Students have more instructional time per year in math and science courses

STAFF IMPACT:

- Greater variety of courses to teach
- New courses where students can earn high school credit
- More instructional prep time per week

QUESTIONS? PLEASE CONTACT:

Larry Fleckenstein, 425-385-4023, lfleckenstein@everettsd.org



Strategic Plan Initiative

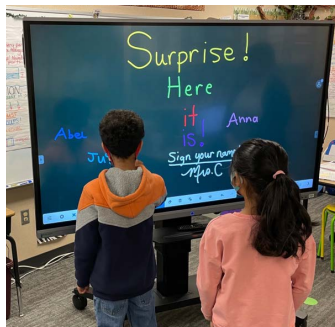
EQUITABLE ACCESS — C.1.c: Ensure classroom technology is standardized across the district and professional learning is provided.



SUMMARY — By providing standardized technology and the professional development to use it, this initiative links to the Equitable Access theme of the strategic plan, which supports the six priority student outcomes.

COMPLETED:

- ✓ Defined and deliver baseline technology kit district-wide
- ✓ Distributed flat panels district-wide
- ✓ Provide ongoing Professional Development for technology



RESOURCE LINKS:

- Flat panel [video](#)
- Parent University panel [video](#)
- Sound enhancement [video](#)
- Standard classroom technology [images](#)
- Strategic plan [link](#)

“Through implementation, professional development and support we ensure all students have the same access to digital technology. Having equitable access to technology makes a world of difference in how students see what their possibilities can be.” - Director of LITS Todd Koren

STUDENT IMPACT:

- “Every student at every school has access to the same technology”
- “The technology allows for interactive lessons, seeing larger space in living color, students have become more engaged”
- “Students live in a world of technology, and they need to see that in the classroom”

TEACHER IMPACT:

- “The technology available enables better engagement and interactivity with the students. We can tap into creativity, and there are infinite possibilities, and it is available for all students.”
- “Panels have allowed me to get student voice out more, multiple students can come up and use it at the same time so they can put their own thoughts up, not just my interpretation of their thoughts.”

QUESTIONS? PLEASE CONTACT:

Todd Koren, 425-385-4206, TKoren@everettsd.org



Strategic Plan Initiative

EQUITABLE ACCESS — C.2.a: Expand participation in high-quality early learning through third grade.



SUMMARY — By expanding student learning options, this initiative links to the Equitable Access theme of the strategic plan, which supports the six priority student outcomes.

COMPLETED:

- ✓ Expanded ECEAP to school day model
- ✓ Expanded ECEAP to inclusive co-teaching model
- ✓ Expanded Play and Learn from two to five days a week
- ✓ Implemented six Transitional Kindergarten classrooms



RESOURCES:

- [Early Learning information](#)
- [Play and Learn video](#)
- [Transitional Kindergarten link](#)
- [ECEAP Preschool link](#)
- [Strategic Plan link](#)

“The early years are critical because data shows that when students are at benchmark in the six developmental areas assessed by WaKIDS, they also meet benchmark in reading and math in third grade. Providing high quality, early learning experiences launches students on an education trajectory of success!”

STUDENT IMPACT:

- Students experience increased kindergarten readiness skills
- Multilingual learners have more opportunities for language development
- Students have access to inclusive learning opportunities
- Social emotional learning is supported for all students

TEACHER IMPACT:

- Transitions into kindergarten are smooth and less stressful
- Students are comfortable at school so teaching and learning can start on day one
- Teacher – student relationships are built earlier, making teaching more effective
- Teachers have more opportunities to engage families in positive school experiences

QUESTIONS? PLEASE CONTACT:

Anne Arnold, 425-385-4089, AArnold@everettsd.org



Strategic Plan Initiative

EQUITABLE ACCESS — C.2.b: Ensure flexible learning opportunities and choice programs are accessible for all students.



SUMMARY — By expanding student learning options, this initiative links to the Equitable Access theme of the strategic plan, which supports the six priority students outcomes.

COMPLETED:

- ✓ Connected CTE to students across grade levels
- ✓ Modernized classrooms to align with industry standards
- ✓ Increased internship and worksite opportunities



RESOURCES:

- CTE [web page](#)
- Career Link [web page](#)
- Choice Programs [web page](#)
- Strategic plan [link](#)

“Alex just ate this up and at times was so excited he was jumping up and down. His enthusiastic self went into extreme enthusiasm much to this tired mama's delight.”

STUDENT IMPACT:

- Connects students to more real-world experiences in the classroom
- Offers increased opportunity for post-high school success
- Provides K-12 students with career exploration opportunities
- Allows for more student choice in educational pathways

STAFF IMPACT:

- Allows teachers more flexibility of the curriculum
- Allows for more unique teaching opportunities
- Allows for better communication between teachers and industry professionals

QUESTIONS? PLEASE CONTACT:

Anthony Anderson, 425-385-4185, AAnderson2@everettsd.org